

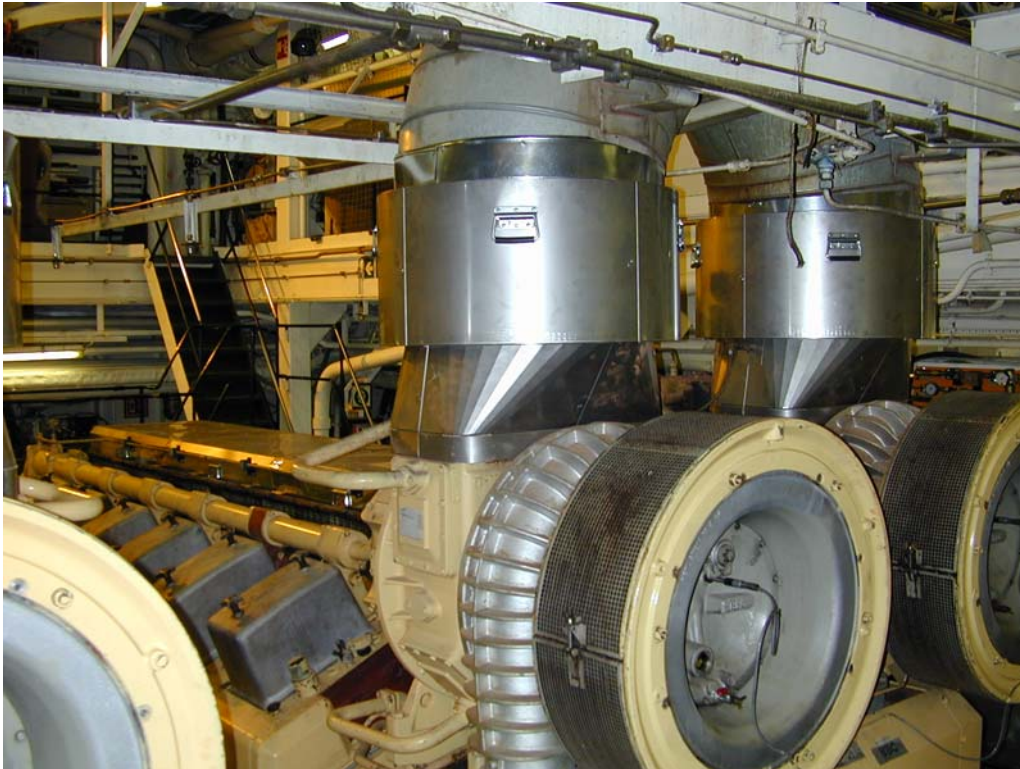
## Adi-XP® Exhaustpipe Insulation Modules

---



## **Adi-XP<sup>®</sup> Exhaustpipe Insulation Modules**

---



Developed for marine & industrial use where durable and good insulation is needed.

Low surface temperatures:

- For example, IMO's Solas regulations require that all surfaces with higher temperature than 220°C are to be properly insulated, and the insulation are to be encased with steel sheathing or equivalent material to prevent penetration of oil.

Modular construction:

- Moving by using only manpower
- Fast to replace a module, if damaged

Patented locking system:

- Fast to install and dismount
- Lock stands against vibration and impacts
- No unintentional opening

## Adi-XP® Exhaustpipe Insulation Modules

---



## Adi-XP<sup>®</sup> Exhaustpipe Insulation Modules

---



## Adi-XP<sup>®</sup> Exhaustpipe Insulation Modules

---



## **Adi-XP<sup>®</sup> Exhaustpipe Insulation Modules**

---



### **Contact information:**

contact@adiabatix.fi

Adiabatix Oy  
Pääportti 3  
65320 Vaasa Finland  
Tel +358 (0)6 3610 390  
Fax +358 (0)6 3610 391

Visit our website for additional information: [www.adiabatix.fi](http://www.adiabatix.fi)